

**Format for Mandatory Disclosure**

Mandatory Disclosure	<b>update on 24.01.2018</b>
<b>10.1</b> AICTE File No.	<b>07/06/KER/MBA/2002/043</b>
Date & Period of last Approval	<b>30/03/2017 2017 - 2018</b>
<b>10.2</b> Name of the Institution	<b>MEMBER SREE NARAYANA PILLAI INSTITUTE OF MANAGEMENT AND TECHNOLOGY</b>
Address of the Institution	<b>MADAPPALLY, MUKUNDAPURAM, CHAVARA, KOLLAM, KERALA</b>
City & Pin Code	<b>KOLLAM, 691 585</b>
State / UT	<b>KERALA</b>
Longitude & Latitude	<b>76<sup>0</sup>325328<sup>0</sup>E &amp; 8<sup>0</sup>592845<sup>0</sup>N</b>
Phone number with STD code	<b>0476 2683973, 3251723</b>
FAX number with STD code	<b>0476 2683974</b>
Office hours at the Institution	<b>9.00 am – 5.00 pm</b>
Academic hours at the Institution	<b>9.00 am – 5.00 pm</b>
Email	<b>msnimt@rediffmail.com</b>
Website	<b>www.msnimt.org</b>
Nearest Railway Station(dist in Km)	<b>Kollam, 25 Km</b>
Nearest Airport (dist in Km)	<b>Thiruvananthapuram, 95 Km</b>

<b>10.3</b>	Type of Institution	<b>Private-Self Financed</b>
	Category (1) of the Institution	<b>Non Minority</b>
	Category (2) of the Institution	<b>Co-Ed</b>
<b>10.4</b>	Name of the organization running the Institution	<b>MEMBER SREE NARAYANA PILLAI TRUST</b>
	Type of the organization	<b>Trust</b>
	Address of the organization	<b>MADAPPALLY, MUKUNDAPURAM (PO), CHAVARA</b>
	Registered with	<b>Sub – Registrar Office, Chavara</b>
	Registration date	<b>19.10.2001</b>
<b>10.5</b>	Name of the affiliating University / Board	<b>University of Kerala</b>
	Address	<b>University of Kerala, Thiruvananthapuram, Kerala</b>
	Website	<b><a href="http://www.keralauniversity.ac.in/">http://www.keralauniversity.ac.in/</a></b>
	Latest affiliation period	<b>01.06.2002      No. Ac.B.1/036290/01</b>
<b>10.6</b>	Name of Principal / Director	<b>Dr. P N Prasad</b>
	Exact Designation	<b>Principal</b>
	Phone number with STD code	<b>0476 2181397</b>
	FAX number with STD code	<b>0476 2683974</b>
	Email	<b>Pnprasad_2000@yahoo.co.uk</b>
	Highest Degree	<b>Ph.D</b>
	Field of specialization	<b>Management.</b>

**10.7** Governing Board Members

**N. Vijayan Pillai (Managing trustee)**  
**S. Ramakrishna Pillai (Director)**  
**N. Chandran Pillai (Director)**  
**Adv. N. Rajan Pillai. BA. LLB (Director)**  
**N. Unnikrishna Pillai. MA. LLB (Director)**  
**Adv. Radhakrishna Pillai**  
**Dr. P N Prasad (Principal ,MSNIMT)**  
**Prof. N. Gopalakrishna Pillai(Joint Director)**  
**Dr.Govindan Kutty (Professor MSNIMT)**  
**Madhu.R (Asso.Professor,MSNIMT)**  
**Dr.Ratheesh (Former MD,Capex)**  
**P.C Pillai (Former MD, KSFE)**

Frequency of meetings & date of last meeting

**Two time in a year**

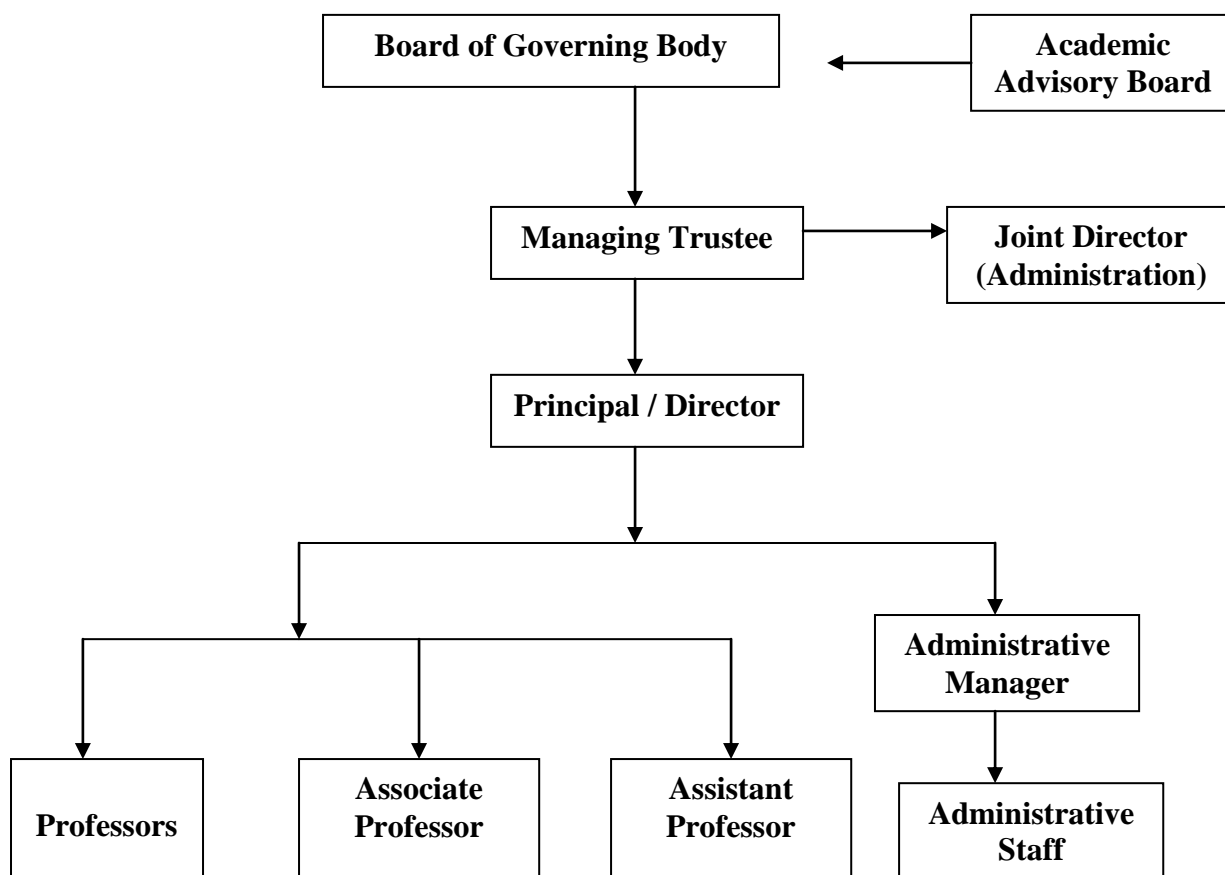
**10.8** Academic Advisory Body

**Padmasree Dr. B. Ravi Pillai – CEO of AI-NasarullaCo. Bahrain**  
**Dr. M.K.Ramachandran Nair Former VC of University of Kerala**  
**Dr.K.S.Chandrasekhar- Chairman Board of Studies in Business Management, University of Kerala, Thiruvananthapuram**  
**Mr. Sunil Jose – Asso. Vice President, Infosys, Technopark**  
**Dr. P. T. Raveendran – Professor & Head Department of Management,Kannur University, Thalassery**  
**Dr. Ratheesh – Former MD, Capex**  
**Mr. P C Pillai – Former MD, KSFE**  
**Prof. N. Rajagopalan Nair – Rtd. Executive Director. Indian Rare Earth Ltd**  
**Dr. C. J. Thomas – Former Principal of MSNIMT**

Frequency of meetings & date of last meeting

**Two time in a year**

**10.9** Organizational Chart



**10.10** Student feedback mechanism on Institutional Governance/faculty performance

**Yes**

**10.11** Grievance redressal mechanism for faculty, staff and students

**Yes**

**10.12** Name of the Department\*

**Management**

Course

**MBA**

Level

**Post Graduation**

1<sup>st</sup> Year of approval by the Council

**2002**

Year wise Sanctioned Intake	CAY	<b>120</b>	CAY <sub>-1</sub>	<b>120</b>	CAY <sub>-2</sub>	<b>120</b>
Year wise Actual Admissions	CAY	<b>43</b>	CAY <sub>-1</sub>	<b>54</b>	CAY <sub>-2</sub>	<b>98</b>
Cut off marks – General quota	CAY	<b>50%</b>	CAY <sub>-1</sub>	<b>50%</b>	CAY <sub>-2</sub>	<b>50%</b>
% Students passed with Distinction	CAY	<b>3%</b>	CAY <sub>-1</sub>	<b>2%</b>	CAY <sub>-2</sub>	<b>2%</b>
% Students passed with First Class	CAY	<b>97%</b>	CAY <sub>-1</sub>	<b>86%</b>	CAY <sub>-2</sub>	<b>86%</b>
Students Placed	CAY	<b>77</b>	CAY <sub>-1</sub>	<b>77</b>	CAY <sub>-2</sub>	<b>81</b>
Average Pay package, Rs./Year	CAY	<b>220000/-</b>	CAY <sub>-1</sub>	<b>220000/-</b>	CAY <sub>-2</sub>	<b>160000/-</b>
Students opted for Higher Studies	CAY	<b>4</b>	CAY <sub>-1</sub>	<b>3</b>	CAY <sub>-2</sub>	<b>6</b>
Accreditation Status of the course	<b>Not Accredited</b>					
Doctoral Courses	<b>No</b>					
Foreign Collaborations, if any	<b>Hosted the student Exchange programme of University of Kerala with Coventry University</b>					
Professional Society Memberships	<b>Yes</b>					
Professional activities	<b>Yes</b>					
Consultancy activities	<b>Yes</b>					
Grants fetched	<b>SDP conducted on 2008, AICTE Aided</b>					
Departmental Achievements	<b>National / Internationals Seminars</b>					
Distinguished Alumni						

<b>10.13a</b>	Name of Teaching Staff*	<b>Dr. P N Prasad</b>		
	Designation	<b>Principal</b>		
	Department	<b>Management</b>		
	Date of Joining the Institution	<b>09.01.2013</b>		
	Qualifications with Class/Grade	<b>UG B.Sc (Engg)</b>	<b>PG MBA</b>	<b>PhD PhD</b>
	Total Experience in Years	Teaching <b>23 yrs</b>	Industry <b>15 yrs</b>	Research <b>15yrs</b>
	Papers Published	National <b>25</b>	International <b>10</b>	
	Papers Presented in Conferences	National <b>07</b>	International <b>07</b>	
	PhD Guide? Give field & University	Field <b>Management</b>	University <b>Anna University, Kerala University</b>	
	PhDs / Projects Guided	PhDs <b>8</b>	Projects at Masters level <b>10 - MPhil, 70 -MBA</b>	
	Books Published /IPRs/ Patents	<b>1</b>		
	Professional Memberships	<b>1. Member in Trichur Mangement Association</b>		
	Consultancy Activities			
	Awards	<b>So far nil</b>		
	Grants fetched			
	Interaction with Professional Institutions	<b>Supervising guide for Phd research in Anna University &amp; Kerala University. Doctoral Committee member in Nooral Islam Univesity, Kerala University.</b>		



<b>10.13b</b>	Name of Teaching Staff*	<b>Dr.K Govindan Kutty</b>		
	Designation	<b>Professor</b>		
	Department	<b>Management</b>		
	Date of Joining the Institution	<b>02.09.2010</b>		
	Qualifications with Class/Grade	UG <b>B.Com</b>	PG <b>M.Com, MPhil, MBA</b>	PhD <b>PhD</b>
	Total Experience in Years	Teaching <b>37 yrs</b>	Industry	Research <b>5yrs</b>
	Papers Published	National <b>16</b>		International
	Papers Presented in Conferences	National <b>5</b>		International <b>1</b>
	PhD Guide? Give field & University	Field		University
	PhDs / Projects Guided	PhDs	Projects at Masters level	<b>32</b>
	Books Published /IPRs/ Patents			
	Professional Memberships	<b>Director, kerala association for rural development programme Member, Kerala Academy of Social Science</b>		
	Consultancy Activities			
	Awards			
	Grants fetched	<b>Miner Research Project, Major Research Project funded by UGC</b>		
	Interaction with Professional Institutions	<b>Resource person, Institute of Chartered Accountant of India</b>		



<b>10.13c</b>	Name of Teaching Staff*	<b>Dr. Madhu R</b>		
	Designation	<b>Vice Principal</b>		
	Department	<b>Management</b>		
	Date of Joining the Institution	<b>10.09.2002</b>		
	Qualifications with Class/Grade	UG <b>BBA</b>	PG <b>MBA, PGDCA</b>	PhD <b>PhD</b>
	Total Experience in Years	Teaching <b>16</b>	Industry <b>1</b>	Research <b>5</b>
	Papers Published	National <b>6</b>		International <b>2</b>
	Papers Presented in Conferences	National <b>2</b>		International <b>4</b>
	PhD Guide? Give field & University	Field		University
	PhDs / Projects Guided	PhDs	Projects at Masters level	<b>115</b>
	Books Published /IPRs/ Patents	<b>So far Nil</b>		
	Professional Memberships	<b>Secretary QMA</b>		
	Consultancy Activities	<b>C Green, MEC (Marketing Executive's Club), SATHI</b>		
	Awards	<b>So far Nil</b>		
	Grants fetched	<b>So far Nil</b>		
	Interaction with Professional Institutions	<b>Former treasurer QMA</b>		





<b>10.13d</b>	Name of Teaching Staff*	<b>Mr. Soman Pillai .K</b>		
	Designation	<b>Professor</b>		
	Department	<b>Management</b>		
	Date of Joining the Institution	<b>10.07.2014</b>		
	Qualifications with Class/Grade	UG <b>B.Com</b>	PG <b>M.Com, M Phil</b>	PhD
	Total Experience in Years	Teaching <b>36 yrs</b>	Industry	Research
	Papers Published	National		International
	Papers Presented in Conferences	National		International
	PhD Guide? Give field & University	Field		University
	PhDs / Projects Guided	PhDs		Projects at Masters level
	Books Published /IPRs/ Patents			
	Professional Memberships			
	Consultancy Activities			
	Awards			
	Grants fetched			
	Interaction with Professional Institutions			



<b>10.13e</b>	Name of Teaching Staff*	<b>Mr.Rajan Pillai S</b>		
	Designation	<b>Professor</b>		
	Department	<b>Management</b>		
	Date of Joining the Institution	<b>08.09.2015</b>		
	Qualifications with Class/Grade	UG <b>BCom</b>	PG <b>MCom, Mphil</b>	PhD
	Total Experience in Years	Teaching <b>30 yrs</b>	Industry	Research
	Papers Published	National		International
	Papers Presented in Conferences	National		International
	PhD Guide? Give field & University	Field		University
	PhDs / Projects Guided	PhDs		Projects at Masters level
	Books Published /IPRs/ Patents			
	Professional Memberships			
	Consultancy Activities			
	Awards			
	Grants fetched			
	Interaction with Professional Institutions			



<b>10.13f</b>	Name of Teaching Staff*	<b>Ms. Remadevi Amma K</b>		
	Designation	<b>Associate Professor</b>		
	Department	<b>Management</b>		
	Date of Joining the Institution	<b>04.08.2008</b>		
	Qualifications with Class/Grade	UG <b>B.Sc (Engg)</b>	PG <b>MBA, PGDCA</b>	PhD
	Total Experience in Years	Teaching <b>18 yrs</b>	Industry <b>22 yrs</b>	Research <b>4 yrs</b>
	Papers Published	National <b>3</b>		International
	Papers Presented in Conferences	National <b>4</b>		International
	PhD Guide? Give field & University	Field		University
	PhDs / Projects Guided	PhDs	Projects at Masters level	<b>90</b>
	Books Published /IPRs/ Patents	<b>So far Nil</b>		
	Professional Memberships	<b>So far Nil</b>		
	Consultancy Activities	<b>So far Nil</b>		
	Awards	<b>So far Nil</b>		
	Grants fetched	<b>So far Nil</b>		
	Interaction with Professional Institutions	<b>So far Nil</b>		



<b>10.13g</b>	Name of Teaching Staff*	<b>Dr. Vivek S A</b>		
	Designation	<b>Associate Professor</b>		
	Department	<b>Management</b>		
	Date of Joining the Institution	<b>05.04.2006</b>		
	Qualifications with Class/Grade	UG <b>B.Tech</b>	PG <b>MBA</b>	PhD <b>Ph.D</b>
	Total Experience in Years	Teaching <b>12 yrs</b>	Industry	Research <b>5yrs</b>
	Papers Published	National <b>22</b>		International <b>1</b>
	Papers Presented in Conferences	National <b>10</b>		International <b>5</b>
	PhD Guide? Give field & University	Field		University
	PhDs / Projects Guided	PhDs		Projects at Masters level <b>63</b>
	Books Published /IPRs/ Patents			
	Professional Memberships	LIFE MEMBER, KERALA ACADEMY OF SOCIAL SCIENCES E - 44 A, LAKSHMISREE, SASTRI NAGAR KARAMANA P.O, THIRUVANANATHAPURAM – 695002 KERALA.		
	Consultancy Activities			
	Awards			
	Grants fetched			
	Interaction with Professional Institutions	RESOURCE PERSON ,KERALA ASSOCIATION FOR RURAL DEVELOPMENT (KARD) REG.NO.Q 545/2006 FEDERAL BANK BUILDING, KALLUVATHUKKAL P.O, KOLLAM - 691578 KERALA. RESOURCE PERSON, LIONS SERVICE FOUNDATION KERALA, REG.NO.Q/720/05, P. BHARATHAN PILLAI LIONS CENTRE, THIRUMULLAWARAM, KOLLAM - 691012, KERALA.		



<b>10.13h</b>	Name of Teaching Staff*	<b>Dr. Baiju J J</b>		
	Designation	<b>Assistant Professor</b>		
	Department	<b>Management</b>		
	Date of Joining the Institution	<b>22.02.2010</b>		
	Qualifications with Class/Grade	UG <b>BA</b>	PG <b>MBA, PGDIB</b>	PhD <b>PhD</b>
	Total Experience in Years	Teaching <b>14 yrs</b>	Industry <b>3 yrs</b>	Research <b>4.5yrs</b>
	Papers Published	National <b>9</b>		International <b>1</b>
	Papers Presented in Conferences	National <b>8</b>		International <b>2</b>
	PhD Guide? Give field & University	Field		University
	PhDs / Projects Guided	PhDs	Projects at Masters level	<b>100</b>
	Books Published /IPRs/ Patents			
	Professional Memberships	<b>Member in Review of social science, TVM and Member of research forum, IMK, University of Kerala</b>		
	Consultancy Activities			
	Awards			
	Grants fetched			
	Interaction with Professional Institutions			



<b>10.13i</b>	Name of Teaching Staff*	<b>Ms. Hima Kumari. V</b>		
	Designation	<b>Assistant Professor</b>		
	Department	<b>Management</b>		
	Date of Joining the Institution	<b>17.02.2010</b>		
	Qualifications with Class/Grade	UG <b>BBA</b>	PG <b>MBA, M Phil</b>	PhD
	Total Experience in Years	Teaching <b>15yrs</b>	Industry	Research
	Papers Published	National		International
	Papers Presented in Conferences	National <b>4</b>		International
	PhD Guide? Give field & University	Field		University
	PhDs / Projects Guided	PhDs		Projects at Masters level
	Books Published /IPRs/ Patents			
	Professional Memberships			
	Consultancy Activities			
	Awards			
	Grants fetched			
	Interaction with Professional Institutions			



<b>10.13j</b>	Name of Teaching Staff*	<b>Dr. Simi Thomson</b>		
	Designation	<b>Assistant Professor</b>		
	Department	<b>Management</b>		
	Date of Joining the Institution	<b>7.12.2011</b>		
	Qualifications with Class/Grade	UG <b>BBA</b>	PG <b>MBA, UGC/NET</b>	PhD <b>PhD</b>
	Total Experience in Years	Teaching <b>7 yrs</b>	Industry <b>1yrs</b>	Research <b>4yrs</b>
	Papers Published	National <b>5</b>		International <b>1</b>
	Papers Presented in Conferences	National <b>8</b>		International <b>2</b>
	PhD Guide? Give field & University	Field		University
	PhDs / Projects Guided	PhDs	Projects at Masters level	10
	Books Published /IPRs/ Patents			
	Professional Memberships	<b>Indian Accounting Association</b>		
	Consultancy Activities			
	Awards			
	Grants fetched			
	Interaction with Professional Institutions	<b>IMK trivandrum</b>		



<b>10.13k</b>	Name of Teaching Staff*	<b>Ms. JISHA SASIKUMAR</b>		
	Designation	<b>Assistant Professor</b>		
	Department	<b>Management</b>		
	Date of Joining the Institution	<b>12/09/2012</b>		
	Qualifications with Class/Grade	UG <b>B-COM</b>	PG <b>MBA</b>	PhD
	Total Experience in Years	Teaching <b>7 yrs</b>	Industry <b>1yrs</b>	Research
	Papers Published	National		International
	Papers Presented in Conferences	National		International
	PhD Guide? Give field & University	Field		University
	PhDs / Projects Guided	PhDs		Projects at Masters level 10
	Books Published /IPRs/ Patents			
	Professional Memberships			
	Consultancy Activities			
	Awards			
	Grants fetched			
	Interaction with Professional Institutions			





<b>10.131</b>	Name of Teaching Staff*	<b>Mr.SURENDRA NADHAN.S</b>		
	Designation	<b>Assistant Professor</b>		
	Department	<b>Management</b>		
	Date of Joining the Institution	<b>01.10.2013</b>		
	Qualifications with Class/Grade	UG <b>BSc,LLB</b>	PG <b>MSc, MBA</b>	PhD
	Total Experience in Years	Teaching <b>9 yrs</b>	Industry <b>10 yrs</b>	Research
	Papers Published	National		International
	Papers Presented in Conferences	National		International
	PhD Guide? Give field & University	Field		University
	PhDs / Projects Guided	PhDs		Projects at Masters level
	Books Published /IPRs/ Patents			
	Professional Memberships			
	Consultancy Activities			
	Awards			
	Grants fetched			
	Interaction with Professional Institutions			



<b>10.13m</b>	Name of Teaching Staff*	<b>Mr. B. Asok Kumar</b>		
	Designation	<b>Assistant Professor</b>		
	Department	<b>Management</b>		
	Date of Joining the Institution	<b>10.06.2015</b>		
	Qualifications with Class/Grade	UG <b>BCom,LLB</b>	PG <b>MCom, MBA,PGDMM</b>	PhD
	Total Experience in Years	Teaching <b>12 yrs</b>	Industry <b>14yrs</b>	Research
	Papers Published	National		International
	Papers Presented in Conferences	National		International
	PhD Guide? Give field & University	Field		University
	PhDs / Projects Guided	PhDs		Projects at Masters level
	Books Published /IPRs/ Patents			
	Professional Memberships			
	Consultancy Activities			
	Awards			
	Grants fetched			
	Interaction with Professional Institutions			



**10.13n** Name of Teaching Staff\*

**Ms.Sudha.S**

Designation

**Assistant Professor**

Department

**Management**

Date of Joining the Institution

**06.08.2014**



Qualifications with Class/Grade

UG **B.Com** PG **M.Com, MBA, M Phil, PGDHRM,NET** PhD

Total Experience in Years

Teaching **15 yrs** Industry Research

Papers Published

National International

Papers Presented in Conferences

National International

PhD Guide? Give field & University

Field University

PhDs / Projects Guided

PhDs Projects at Masters level **100**

Books Published /IPRs/ Patents

Professional Memberships

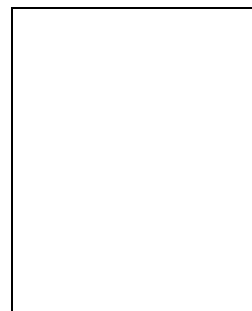
Consultancy Activities

Awards

Grants fetched

Interaction with Professional Institutions

<b>10.13o</b>	Name of Teaching Staff*	<b>Dr. BINDU NAIR</b>		
	Designation	<b>Assistant Professor</b>		
	Department	<b>Management</b>		
	Date of Joining the Institution	<b>01.01.2014</b>		
	Qualifications with Class/Grade	UG <b>BSc Chemistry</b>	PG <b>MBA</b>	PhD <b>PhD</b>
	Total Experience in Years	Teaching <b>9 yrs</b>	Industry <b>12yrs</b>	Research <b>4yrs</b>
	Papers Published	National		International
	Papers Presented in Conferences	National		International
	PhD Guide? Give field & University	Field		University
	PhDs / Projects Guided	PhDs		Projects at Masters level
	Books Published /IPRs/ Patents	<b>1</b>		
	Professional Memberships			
	Consultancy Activities			
	Awards			
	Grants fetched			
	Interaction with Professional Institutions			



<b>10.13p</b>	Name of Teaching Staff*	<b>Arun Aravind</b>		
	Designation	<b>Assistant Professor</b>		
	Department	<b>Management</b>		
	Date of Joining the Institution	<b>11.09.2017</b>		
	Qualifications with Class/Grade	UG <b>MA English</b>	PG <b>BA English</b>	PhD
	Total Experience in Years	Teaching <b>11yrs</b>	Industry <b>2 yrs</b>	Research
	Papers Published	National		International
	Papers Presented in Conferences	National		International
	PhD Guide? Give field & University	Field		University
	PhDs / Projects Guided	PhDs		Projects at Masters level
	Books Published /IPRs/ Patents			
	Professional Memberships			
	Consultancy Activities			
	Awards			
	Grants fetched			
	Interaction with Professional Institutions			



<b>10.13q</b>	Name of Teaching Staff*	<b>Nair Beenu Babu</b>		
	Designation	<b>Assistant Professor</b>		
	Department	<b>Management</b>		
	Date of Joining the Institution	<b>04.10.2017</b>		
	Qualifications with Class/Grade	UG <b>B.Com</b>	PG <b>M.Com, MBA</b>	PhD
	Total Experience in Years	Teaching <b>1 yrs</b>	Industry <b>1.5yrs</b>	Research
	Papers Published	National		International
	Papers Presented in Conferences	National		International <b>1</b>
	PhD Guide? Give field & University	Field		University
	PhDs / Projects Guided	PhDs		Projects at Masters level
	Books Published / IPRs/ Patents			
	Professional Memberships			
	Consultancy Activities			
	Awards			
	Grants fetched			
	Interaction with Professional Institutions			



<b>10.14</b>	Admission quota <sup>#</sup>	<b>100% Merit</b>		
	Entrance test / admission criteria	<b>C-MAT, K MAT, CAT</b>		
	Cut off / last candidate admitted	CAY <b>72</b>	CAY <sub>-1</sub> <b>72</b>	CAY <sub>-2</sub> <b>365</b>
	Fees in rupees	CAY <b>60000/-</b>	CAY <sub>-1</sub> <b>60000/-</b>	CAY <sub>-2</sub> <b>50000/-</b>
	Number of Fee Waivers offered			
	Admission Calendar	<b>Last date for request of applications : 16-04-18</b> <b>Last date for submission of application : 25-04-18</b> <b>Date for Group Discussion (GD)/ Interview: 05-05-18</b> <b>Dates for announcing Final result : 15-05-18</b> <b>Release of admission list : 15-05-18</b> <b>Date of acceptance by the candidate : 25-05-18</b> <b>Last date for closing admission : 31-05-18</b> <b>Starting of the academic session : 01-06-18</b>		
	PIO quota	<b>No</b>		

**10.15** Infrastructural information<sup>^</sup>

Classroom/Tutorial Room facilities **Sufficient**



Laboratory details

Computer Centre facilities

**WiFi Campus**



Library facilities

**Sufficient**



Auditorium / Seminar Halls /  
Amphi

**A C Seminar Hall**



Cafeteria





Indoor Sports facilities **Yes**

Outdoor Sports facilities **Yes**

Gymnasium facilities

Facilities for disabled **Yes**

Any other facilities **Digital Language Lab**

**10.16** Boys Hostel



Girls Hostel



Medical & other Facilities at Hostel **Doctor on call**

**10.17** Academic Sessions **Semester**

Examination system, Year / Sem **Semester, University of Kerala Examinations**

Period of declaration of results **Published by University**

<b>10.18</b>	Counseling / Mentoring	<b>Yes</b>
	Career Counseling	<b>Yes</b>
	Medical facilities	<b>Yes</b>
	Student Insurance	<b>Yes</b>
<b>10.19</b>	Students Activity Body	<b>ACMET, MEC, DHANAM, SYNERGY, SIM,EDC</b>
	Cultural activities	<b>Yes</b>
	Sports activities	<b>Yes</b>
	Literary activities	<b>Yes</b>
	Magazine / Newsletter	<b>Yes</b>
	Technical activities/ TechFest	<b>Yes</b>
	Industrial Visits / Tours	<b>Yes</b>
	Alumni activities	<b>Yes</b>
<b>10.20</b>	Name of the Information Officer for RTI	<b>Prof. N. Gopalakrishna Pillai</b>
	Designation	<b>Joint Director</b>
	Phone number with STD code	<b>0476 – 2683973    Mob: 9605610480</b>
	FAX number with STD code	<b>0476 2683974</b>
	Email	<b>msnimt@rediffmail.com</b>